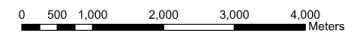




Official Plan

Municipality of Mississippi Mills

Rural Land Use (Schedule A)



Legend

- Provincial Highway**
 - Provincial Highway
 - County Road
 - Other Roads
 - Scenic or Heritage Road

- Boundary**
 - Lot Line
 - Ward Boundary
 - Municipal Boundary
 - Schedule Boundary
 - Parcel Fabric

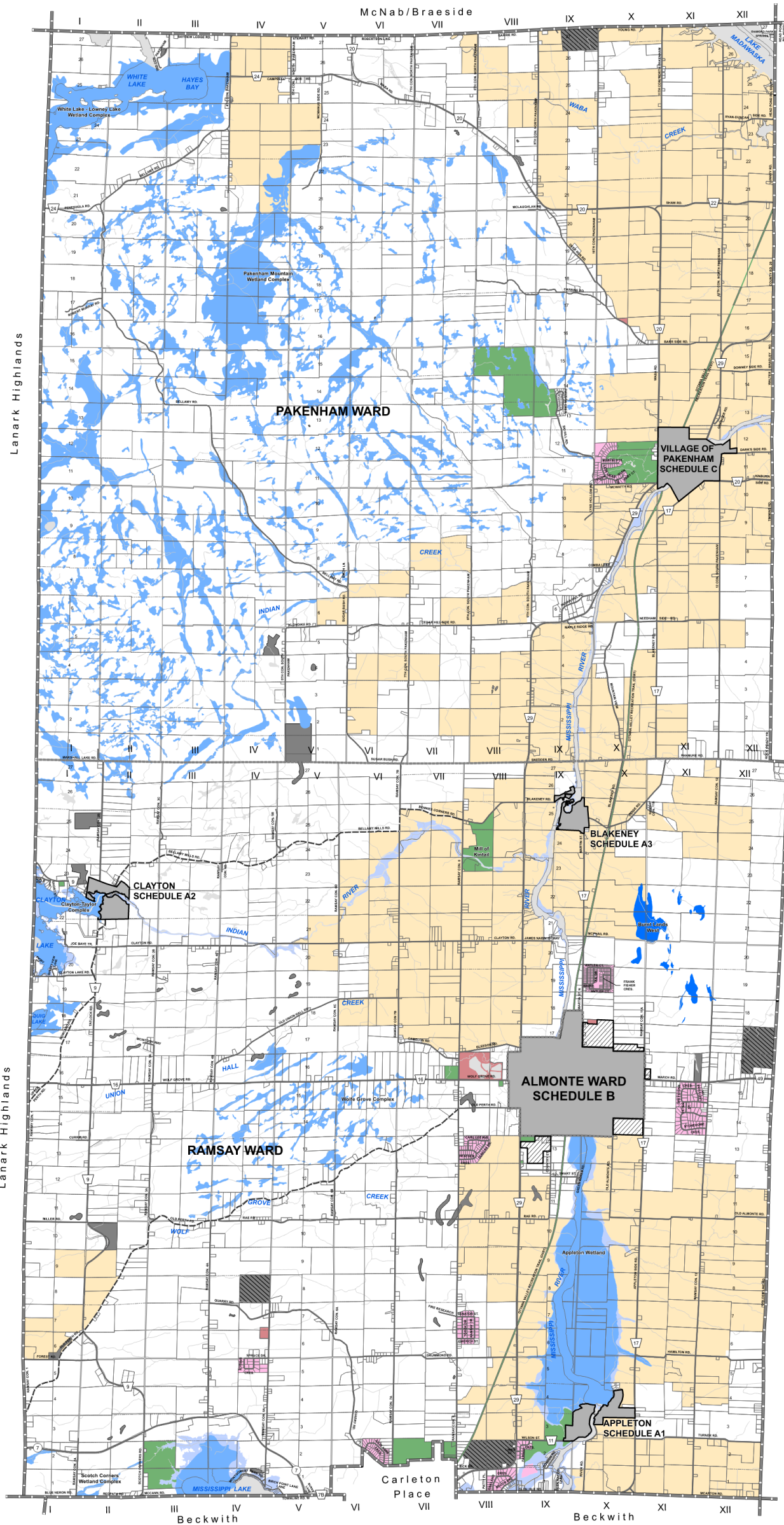
- Water Features**
 - Stream / Creek
 - Waterbody

Land Use Designation

- Agriculture
- Aggregate - Pit
- Aggregate - Quarry
- Rural Settlement Area and Hamlet
- Rural
- Waste Disposal
- Parkland and Open Space
- Flood Plain
- Locally Significant Wetland
- Provincially Significant Wetland

Overlay

- Areas Subject to Official Plan Amendment 22 (Under Appeal)



Ottawa

Ottawa

Schedule "A"
Amendment No. ____
to the
Official Plan
of the
Municipality of Mississippi Mills

Revision Dates:

- 23 - November - 2021
- 19 - November - 2021
- 30 - August - 2021
- 8 - March 2022
- 21 - March 2022

Data Source: Source Data has been provided by the Ministry of Natural Resources, Ministry of Northern Development and Mines, Mississippi Valley Conservation Authority and the Municipality of Mississippi Mills.



Print: 3/21/2022 11:08:30 AM
Document Path: V:\24000\24473-007 - Mississippi Mills LEAR OPA 2015-Land Development\6-GIS\24473_RuralLanduse_ScheduleA_Scn2.mxd