

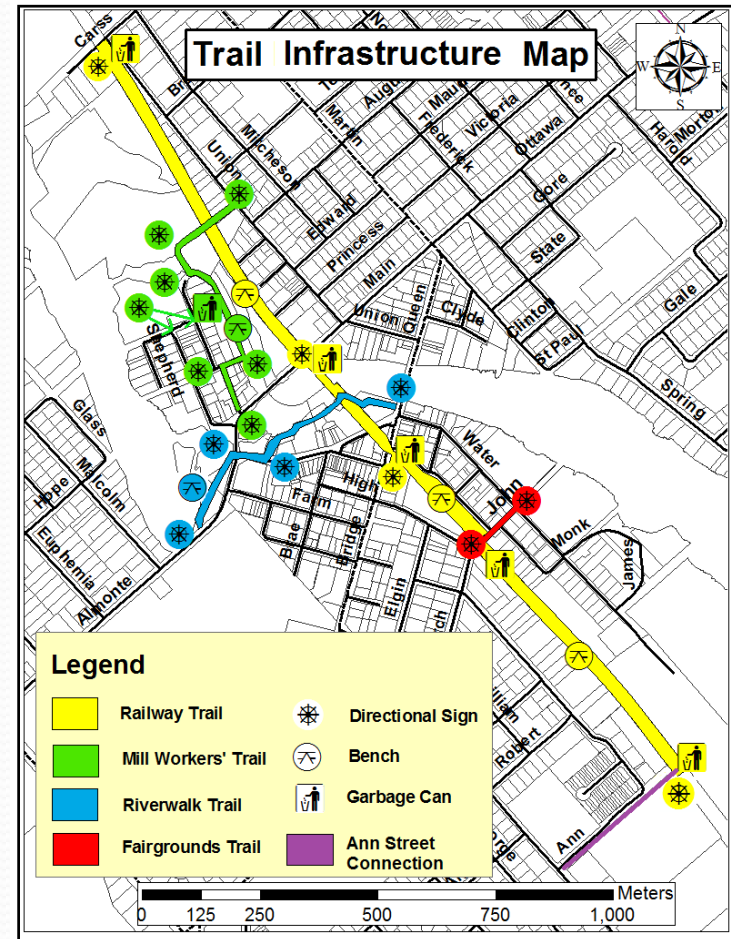
Riverwalk Advisory Committee Ottawa Valley Railway Trail (OVRT)

OVRT/Riverwalk
in Almonte
Presentation
Feb 16, 2017



OVRT – CPR/Riverwalk Trail in Almonte

- Yellow on Map – Ann to Carss Streets
- Pro Bono Stone Dust Trail on CPR Line from Main St to Carss St – Completed Fall 2015
- Trail Concept developed prior to County Buy - Now Mainly a County Project
- Possible Connections at:
[Riverwalk](#), Railway Trestle, Bridge St, [John St](#), [Ann St](#)



Views of OVRT / CPR Trail at Workers' Staircase & Dam Areas



Workers Staircase Rock face &
Earthen Dam Track



View from OVRT/CPR Trail at
Workers' Staircase – Bridge & River
Pool

Riverwalk Extension from OVRT at Mill Workers' Walk & Staircase

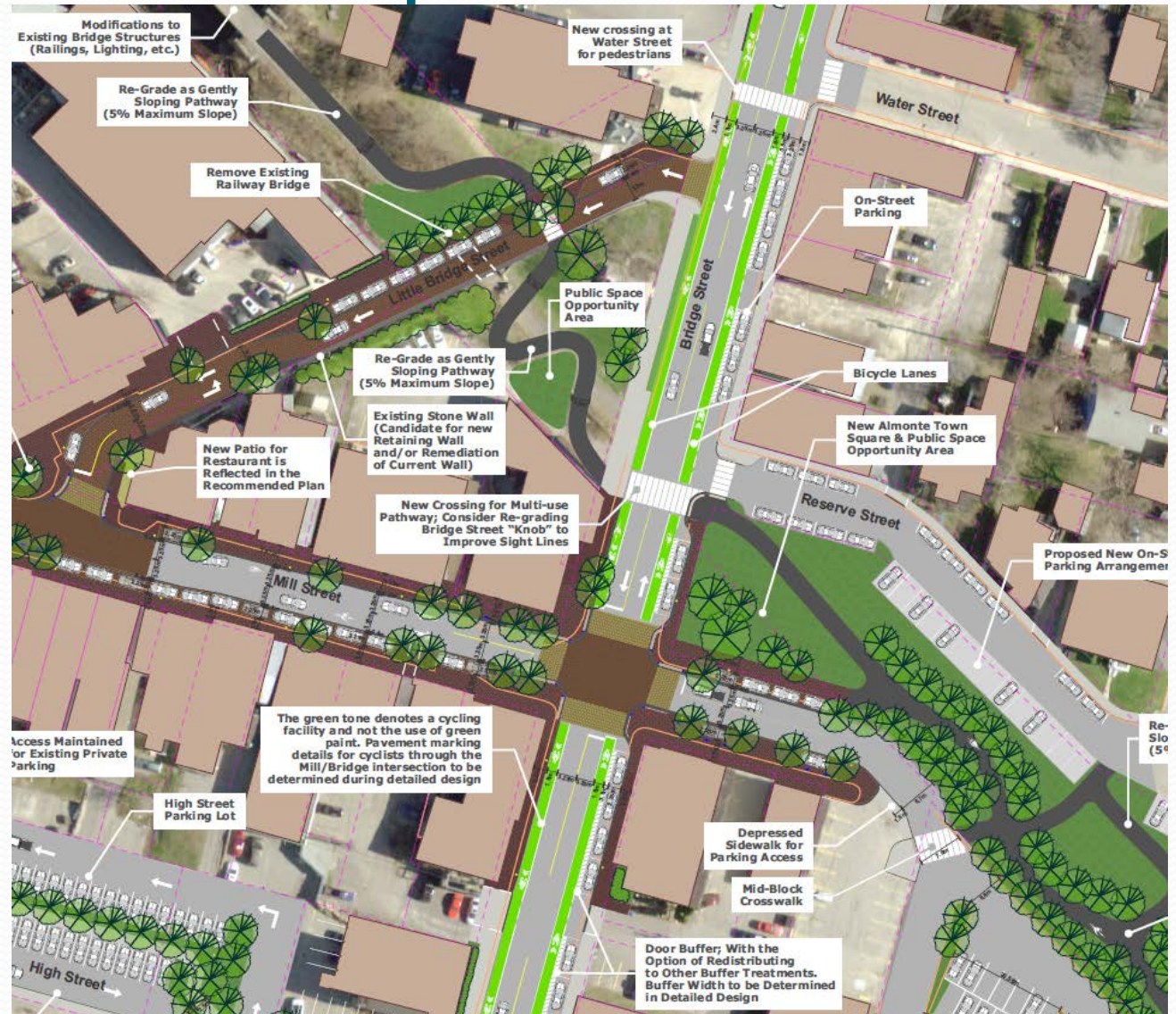
- Former Mill Workers Walkway & Staircase
- Descends from OVRT/CPR Trail
- Agreement near to acquire property



Mill Workers Walkway (aka Bank Street), connecting Union Street to Rosamond Mill on Coleman Island.

Downtown Concept Alternatives

Proposed in
Downtown
Almonte EA
Consistent
with Request
to Lanark
County:
Slides 9 & 10



Existing Stone Dust OVRT/CPR Trail (Main St to Carss St)



Construction Sep 2015



Winter View Jan 2017

Riverwalk at Railway Trestle

Significant Dates:

Bridges complete 2005

Path complete 2010

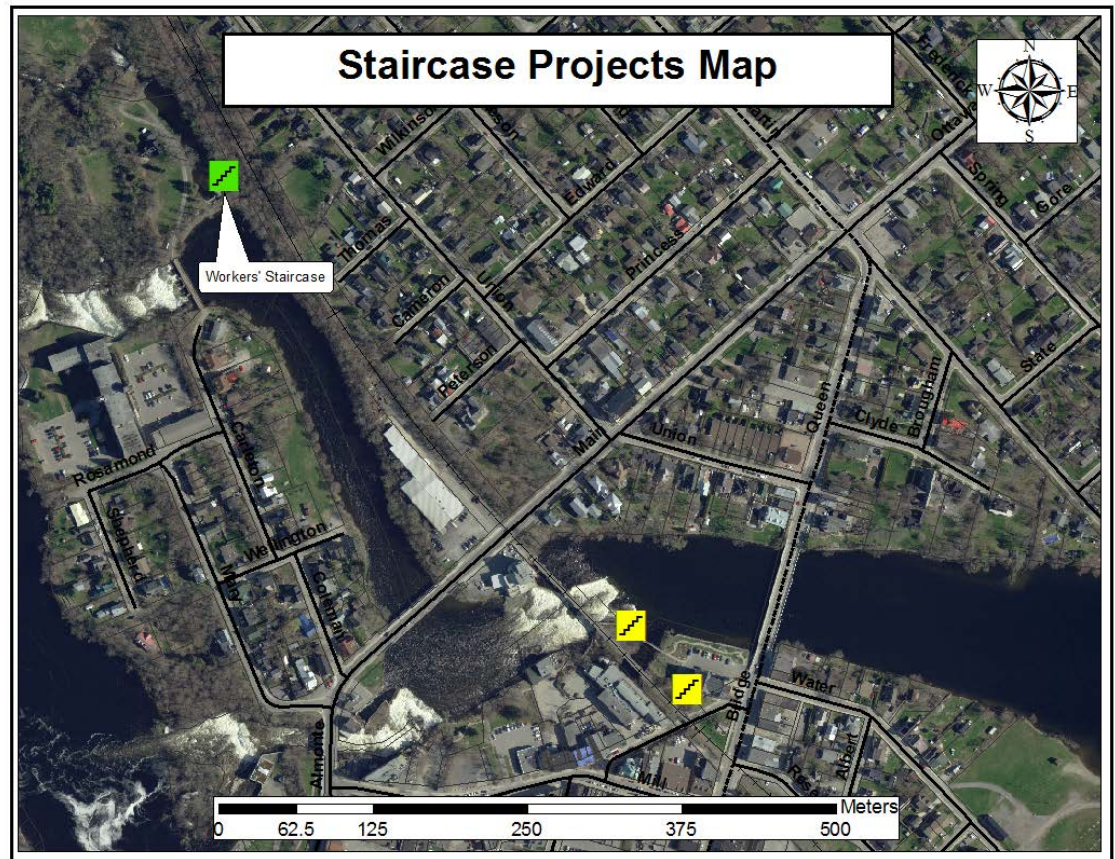


Riverwalk Bridge continuing under Railway Trestle

Possible Steps or Sloped Paths from OVRT/CPR Trail

Steps or Sloped Paths from Trail at:

- Workers' Staircase
- Little Bridge
- Railway Trestle



OVRT - CPR Trail in Almonte – Request to Lanark County (1)

- Construct pedestrian & bike trail from Carss St to Ann St at ball field:
 - Paved or Stone Dust TBD (Stone Dust portion completed from Main St to Carss St)
 - No motorized use in Almonte Ward; consider by-pass; safety is the issue
- Install safety railings on Railway Trestle over Mississippi River
 - Allow for input into railing design
- Remove CPR bridge & adjust trail at Little Bridge St as proposed by Downtown Almonte EA consultants (Slide 5)
- Include provisions for Steps or Sloped Path from Trail at: Workers' Staircase, Little Bridge and near Railway Trestle

CPR Trail Through Almonte – Request to Lanark County (2)

- Remove chain link fence by Library from Mill St to John St
- Direction Signs (4) at Carss, Thomas, Mill & Ann Streets
- Interpretive Signs (4): Mill Workers' Staircase, Mill Workers' Walk (Bank St RW), Rail Trestle over Mississippi River, Old CPR Railway Station, Etc. (?)
- Garbage Cans and Pet Waste Receptacles at Carss, Little Bridge, John & Ann Streets
- Benches at Thomas St (Workers' Staircase), Mill to John (Library) and John – Ann
- Permission to add Parking Area along Reserve Street
- Landscaping TBD: Reserve St Parking Area, along Library, flower boxes on the Railway Trestle

Potential for Exciting Trail Network

- OVRT/CPR, Coleman Island and existing Riverwalk Trails are complementary, providing:
 - Significant Trail Network
 - Greatly extended 3 km length
 - Wonderful River Views
- Trails can be linked in various ways to form several interconnected and interesting Loops
- This is a very exciting opportunity

